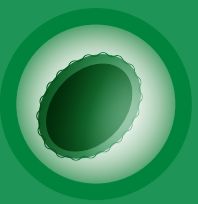
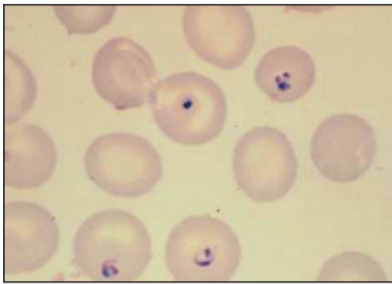


# MALARIA

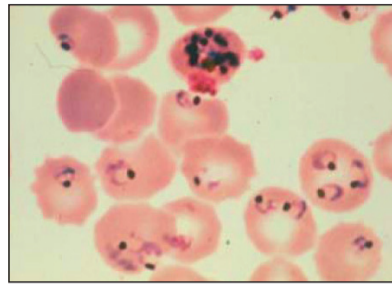
## Parasites found in blood



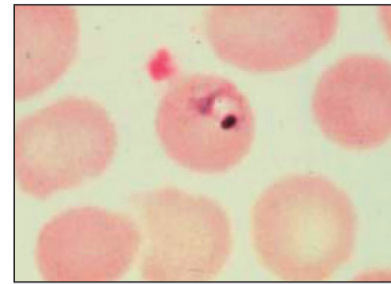
MALARIA - PARASITES FOUND IN BLOOD



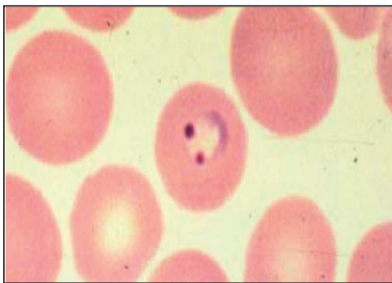
**Young ring trophozoites**  
*P. falciparum*



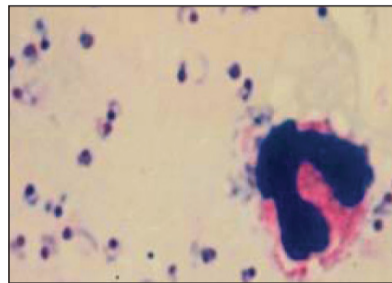
**Ring trophozoites and schizont**  
*P. falciparum*



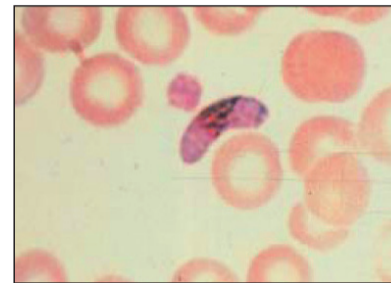
**Developing trophozoite of**  
*P. falciparum*



**Bi-nucleate trophozoite**  
*P. falciparum*



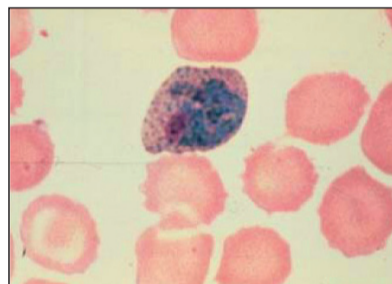
**Thick blood film**  
*P. falciparum*



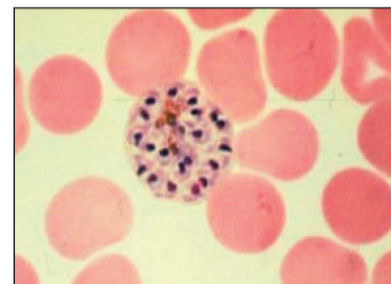
**Gametocyte**  
*P. falciparum*



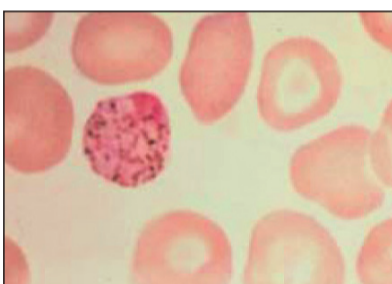
**Trofozoito de**  
*P. vivax*



**Late trophozoite of**  
*P. vivax*



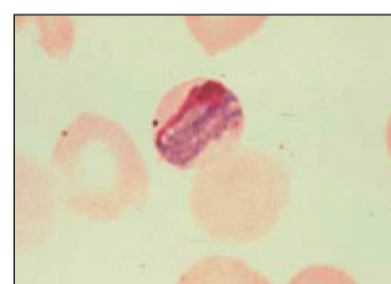
**Schizont of**  
*P. vivax*



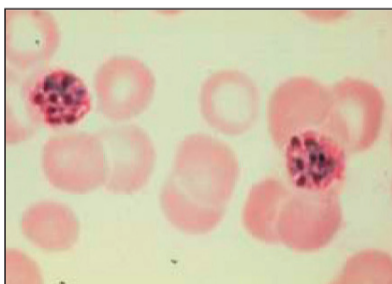
**Gametocyte of**  
*P. vivax*



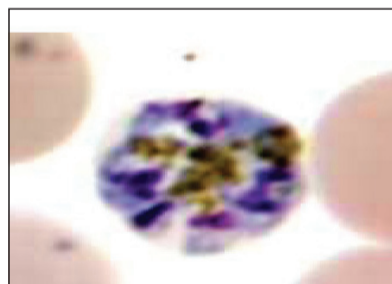
**Schizonts of**  
*P. vivax* in thick film



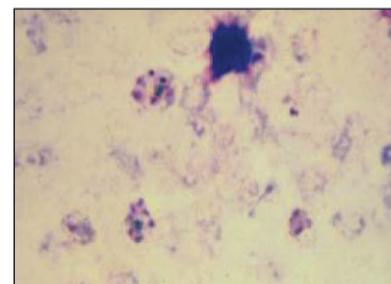
**Late trophozoite of**  
*P. malariae*



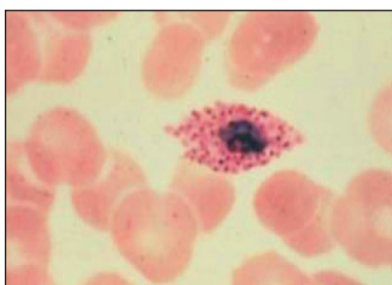
**Schizonts**  
*P. malariae* in thin film



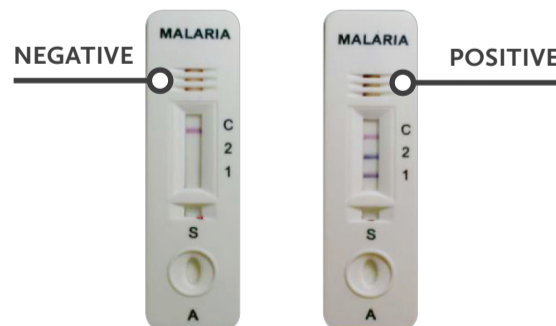
**Schizont**  
*P. malariae* in thin film



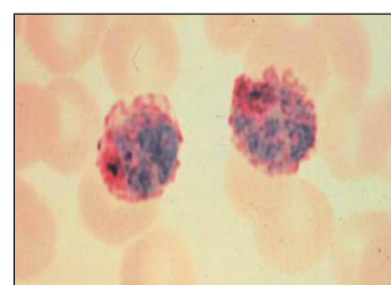
**Schizonts**  
*P. malariae* in thick film



**Late trophozoite of**  
*P. ovale*



CareStart™ Malaria



**Late trophozoite and gametocyte of**  
*P. ovale*

**Product #1630:** Malaria HPR2/pLDH (Pf/pan) - PK30 Highly sensitive for *P. falciparum*

**Product #1631:** Malaria HPR2/pLDH (Pf/VOM) - PK30 VOM can distinguish between a *P. falciparum* & mixed infection

CareStart™ is exclusively available from Apacor Ltd. CareStart™ Malaria has excellent Sensitivity and Specificity see WHO evaluation report.

**APACOR**

UNIT 5, SAPPHIRE CENTRE,  
FISHPONDS ROAD, WOKINGHAM,  
BERKSHIRE, RG41 2QL, ENGLAND  
TEL: +44 (0)118 979 5566  
FAX: +44 (0)118 979 5186

Products can be ordered direct from Apacor  
or from an appointed distributor

Visit our website for all the latest information

[www.apacor.com](http://www.apacor.com) or e-mail on: [sales@apacor.com](mailto:sales@apacor.com)